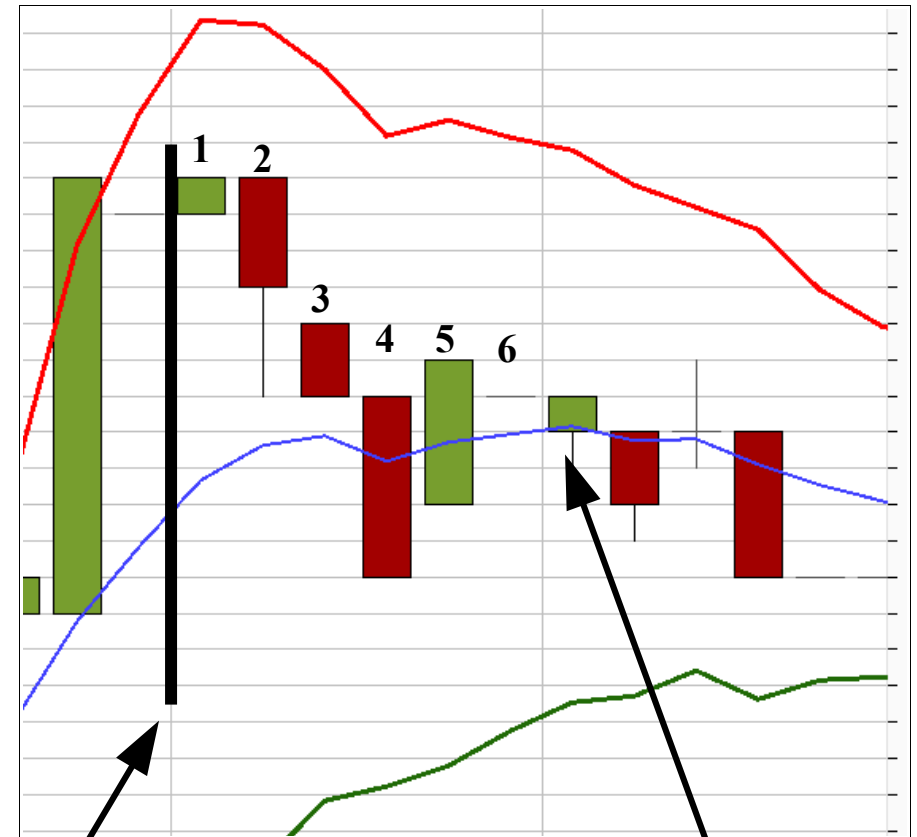


**Higher Time Frame**



**Changing the time frame  
after the close of this candle.**

**Lower Time Frame**



**This is our change in  
the time frames.**

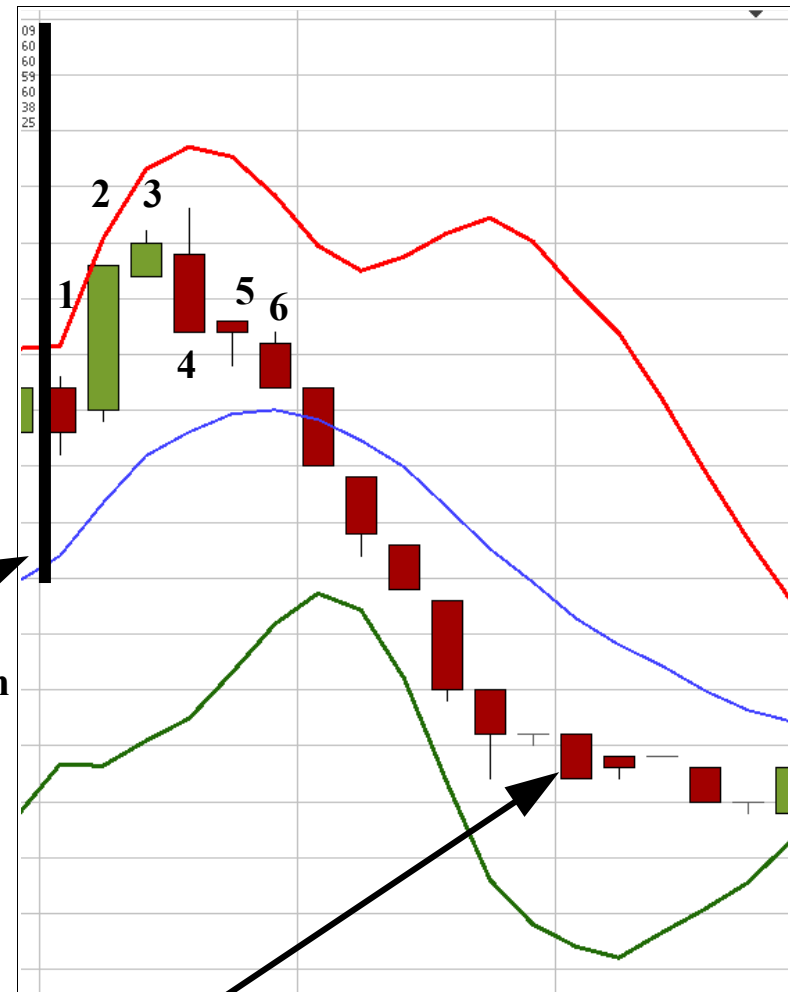
**Opening of a position  
right here: After the doji  
on the lower time frame.  
We are counting the  
candles after the change  
in the time frame.**

**Higher Time Frame**



**Changing the time frame after the close of this candle.**

**Lower Time Frame**



**This is our change in the time frames.**

**Do not open a position here, because this doji occurred too late. If the doji doesn't occur during six candles after the change in the time frames, we do not open a position.**